



GMT MONTHLY MEMBERSHIP PROGRESS REPORT

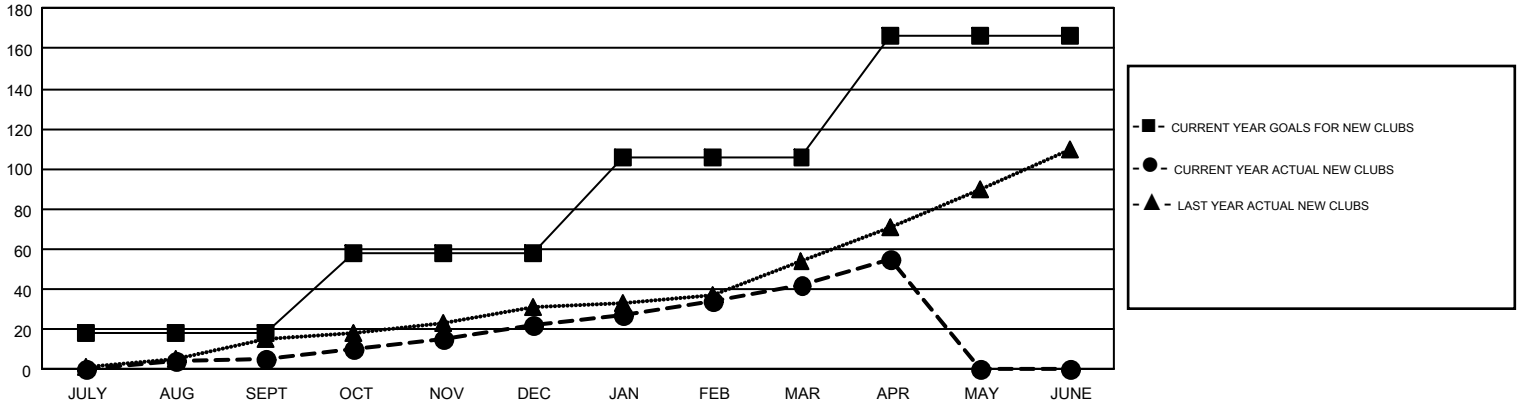
Results as of: 4/30/2017

GMT Constitutional Area 4

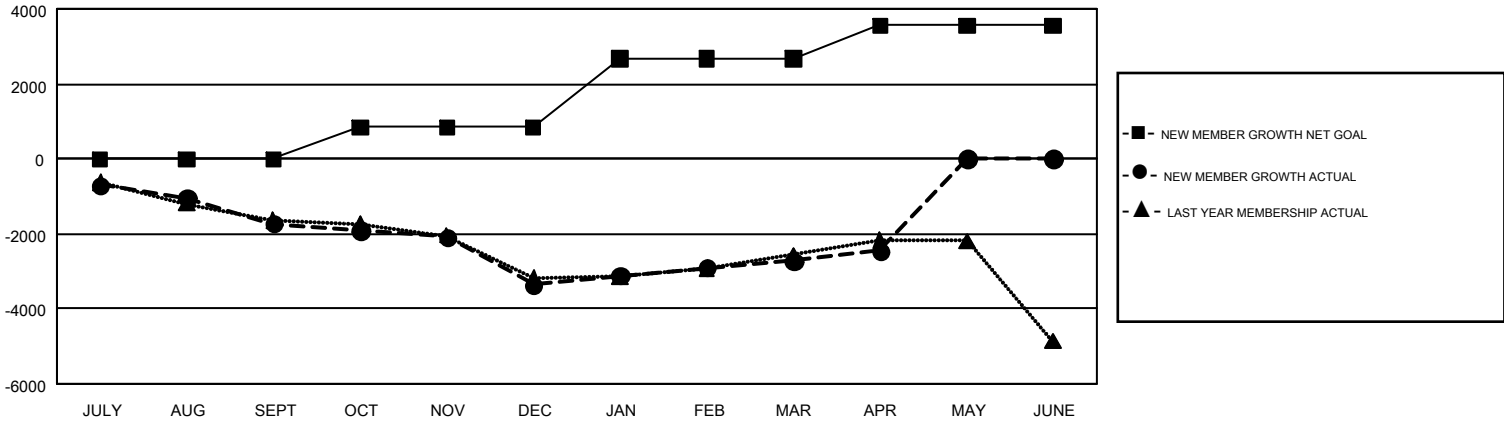
REPORT DOES NOT INCLUDE CLUBS IN UNDISTRICTED AREAS.

Clubs				Members			
RESULTS FOR 2016-2017				RESULTS FOR 2016-2017			
QUARTER	NEW CLUB GOAL	NEW CLUBS	DROPPED CLUBS	QUARTER	NEW MEMBER GROWTH NET GOAL (not reinstated or transfers)	NEW MEMBER GROWTH ACTUAL (not reinstated or transfers)	DROPPED MEMBERS ACTUAL (including transfers)
JULY/AUG/SEPT	18	5	49	JULY/AUG/SEPT	-16	2,568	4,295
OCT/NOV/DEC	40	17	33	OCT/NOV/DEC	856	3,705	5,348
JAN/FEB/MAR	48	20	12	JAN/FEB/MAR	1,841	4,761	4,120
APR/MAY/JUNE	60	13	4	APR/MAY/JUNE	870	1,658	1,389

GOALS AND ACTUAL NEW CLUBS CUMULATIVE



GOALS AND ACTUAL MEMBERS CUMULATIVE



DROPPED CLUBS: 98	5,208 CLUBS OF 9,508 ADDED 1 OR MORE NEW MEMBERS	GENDER DISTRIBUTION MALE 196,512 (78.27%) FEMALE 54,571 (21.73%)
DROPPED MEMBERS DECEASED 2,047 CLUB CANCELLED 338 OTHER 12,761 <hr/> TOTAL 15,146	CLICK HERE FOR CUMULATIVE MEMBERSHIP DATA	TOTAL FAMILY UNIT MEMBERS 9,295 FAMILY MEMBERS PAYING HALF DUES 4,747